

## Optioncalls HTF RSI Indicator

### Description:

The provided Indicator appears to be quite intricate and combines various technical indicators to generate insights about market movement. It involves calculating indicators like RSI, HTF, and performing swing high/low analysis. It's important to note that understanding and implementing such a complex script might require familiarity with Pine Script and trading concepts. Let's break down some key points:

**Timeframe and Security Function:** The indicator allows users to input a timeframe and uses a non-repainting security function to retrieve high and low prices from that timeframe.

**Plotting Data:** The code plots the high and low prices from the higher timeframe (HTF) on the chart, along with some additional visual elements.

**Breakout Alerts:** The script generates alerts when the current close price surpasses the high or low prices from the higher timeframe.

**RSI :** The script calculates the RSI indicator and also implements the HTF indicator, which is used to detect potential trend changes.

**Swing High/Low Analysis:** The script appears to perform analysis on swing highs and lows, using pivot highs and lows to generate labels and lines on the chart.

**Alerts:** The script creates alerts based on certain conditions, likely related to swing high/low points or other criteria.

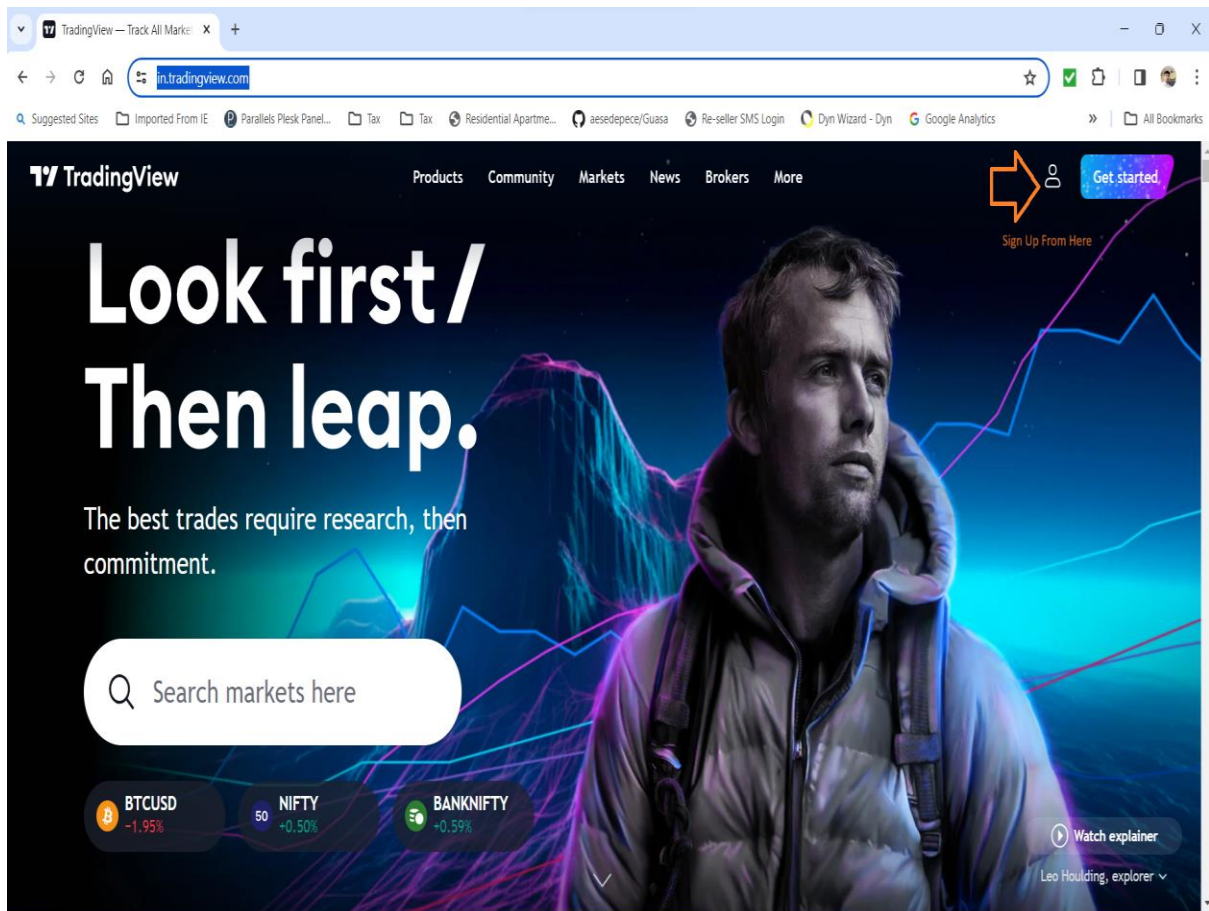
**Lookback Analysis:** The script includes an additional section for performing lookback analysis to count the number of bars that had higher or lower highs compared to the current bar.

**Labels :** Buy Label Indicates Lower Index Graph and Sale Label Indicates Higher Index Graph It Moves As Per Market Movement.

Overall, this script is a combination of various technical analysis techniques to provide insights about market movement, overbought/oversold conditions, and potential trend changes. If you plan to use this script, it's recommended to backtest it thoroughly, understand each indicator's behavior, and consider its relevance to your trading strategy. Additionally, ensure that you fully comprehend the implications of the various alert conditions and label calculations to make informed trading decisions.

## How To Install Indicator On Trading View Chart After Payment :-

Stage 1. Open Account With Trading View <https://in.tradingview.com> or Download App From Play Store



Indicator Setting :- Before Apply On Chart Please Uncheck **Auto** From Settings Shown In Below Image  
Check Scale Price Chart Only



Go To Chart Click On Indicators

Go To Invite – only – scripts

## Select Your Activated Indicators

Q BANKNIF 5m Indicators Alert Replay Unnamed Publish

NIFTY BANK · 5 · NSE 047747.90 H47767.60 L47739.90 C47757.50 +9.55 (+0.02%)

47758.50 0.00 47758.50

Vol 821.016K

### Indicators, Metrics & Strategies

Search

- Favorites
- My scripts
- Technicals
- Financials
- Community Scripts
- Invite-only scripts

SCRIPT NAME	AUTHOR	LIKES
Optioncalls HTF High/Low	Optioncalls	0
Optioncalls HTF OHLC Intraday Candle Pattern	Optioncalls	0
Optioncalls HTF OHLC Intraday Traper	Optioncalls	0
Optioncalls Intraday Buy Sell Scalper	Optioncalls	0
Optioncalls Session Signals	Optioncalls	0
optioncalls VWMA Advance Direction	Optioncalls	0
optioncalls VWMA Index Direction	Optioncalls	0
optioncalls VWMA Index Direction Ltd Label	Optioncalls	0

1D 5D 1M 3M 6M YTD 1Y 5Y All

Stock Screener Pine Editor Strategy Tester Trading Panel

Select Time Frame 5 Minute Or 10 Minute Same On Indicator also, Indicator Default Time Frame Is 10 Minute Please Select Same Time Frame In Indicator & Trading View Window

Q BANKNIF 10m Indicators Alert Replay Optioncalls H... Save Publish

NIFTY BANK · 10 · NSE +11.80 (+0.02%)

47704.95 0.00 47704.95

Vol 5.057M

Buy Sale Indicator 10 ohlc4 10 70 30 97.95

First Draw Trend Line On Previous Day & Current Day Signals To Get

Sell Below When Complete Red Candle Generate Below Trend Line & Candle Doesn't Touch To That Trend Line

Buy Above Green Signal and Candle Not Touch To Trend Line

### Buy Sale Indicator

Inputs Style Visibility

Timeframe 10 min...

RSI Source ohlc4

RSI Length 10

RSI Overbought 70

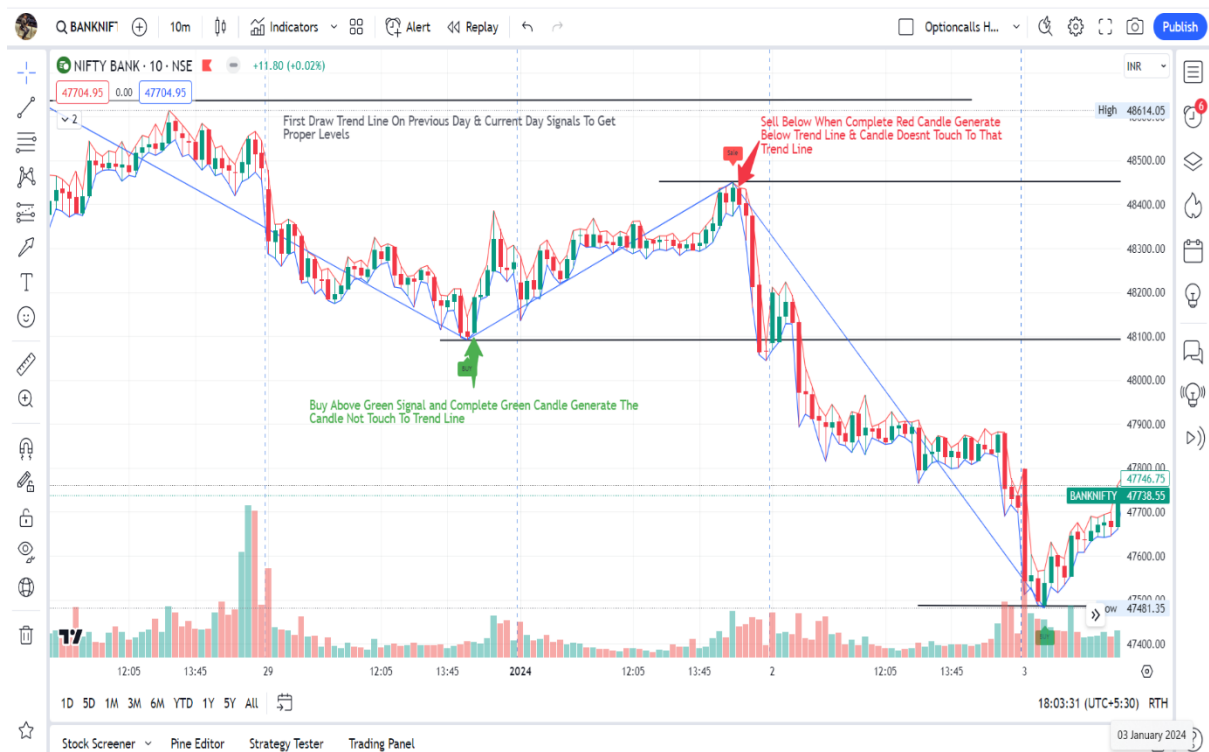
RSI Oversold 30

Defaults Cancel Ok

1D 5D 1M 3M 6M YTD 1Y 5Y All

Stock Screener Pine Editor Strategy Tester Trading Panel

## Indicator Signal :-



1. Draw Trend Line On Previous Day And Current Day Signal From Left Drawing Window On Trading View

2. Your Trading Setup Ready After Draw Trend Line

3. On **Buy** Signal Trend Line, When Complete Green Candle Generate Above Trend Line & That Candle Doesn't touch to Trend Line Then Buy

4. On **Sale** Signal Trend Line, When Complete Red Candle Generate Below Trend Line & That Candle Doesn't touch to Trend Line Then Sale.

NB :- Alerts & Webhook Functions Not Support This Indicator .

## Disclaimer :-

No Any Indicator Or Bot is 100 % Correct Please Test Indicator Before You Take Trade , Indicator Test Done On Historical Calculation. This Indicator Doesn't Guarantee Profitable Trades , Trading Is An Technique And Indicator Provide Visual Technical Analysis Help , Profit & Loss Responsibilities 100 % Depends on Users