

Optioncalls - HTF OHLC Intraday Candle Pattern

The Bot Involves Many Calculations Which Suitable For Intraday Trading , Script Is Filtered Many Objects And Create 4 Types Buy Signal & Two Types Sell Signal , Maintain Stop Loss Minimum 20-30 Points In Option Trading , Maintain Trail Stop Loss Minimum 5 - 25 Points , Sell Points 50 - 150 Above Buying .

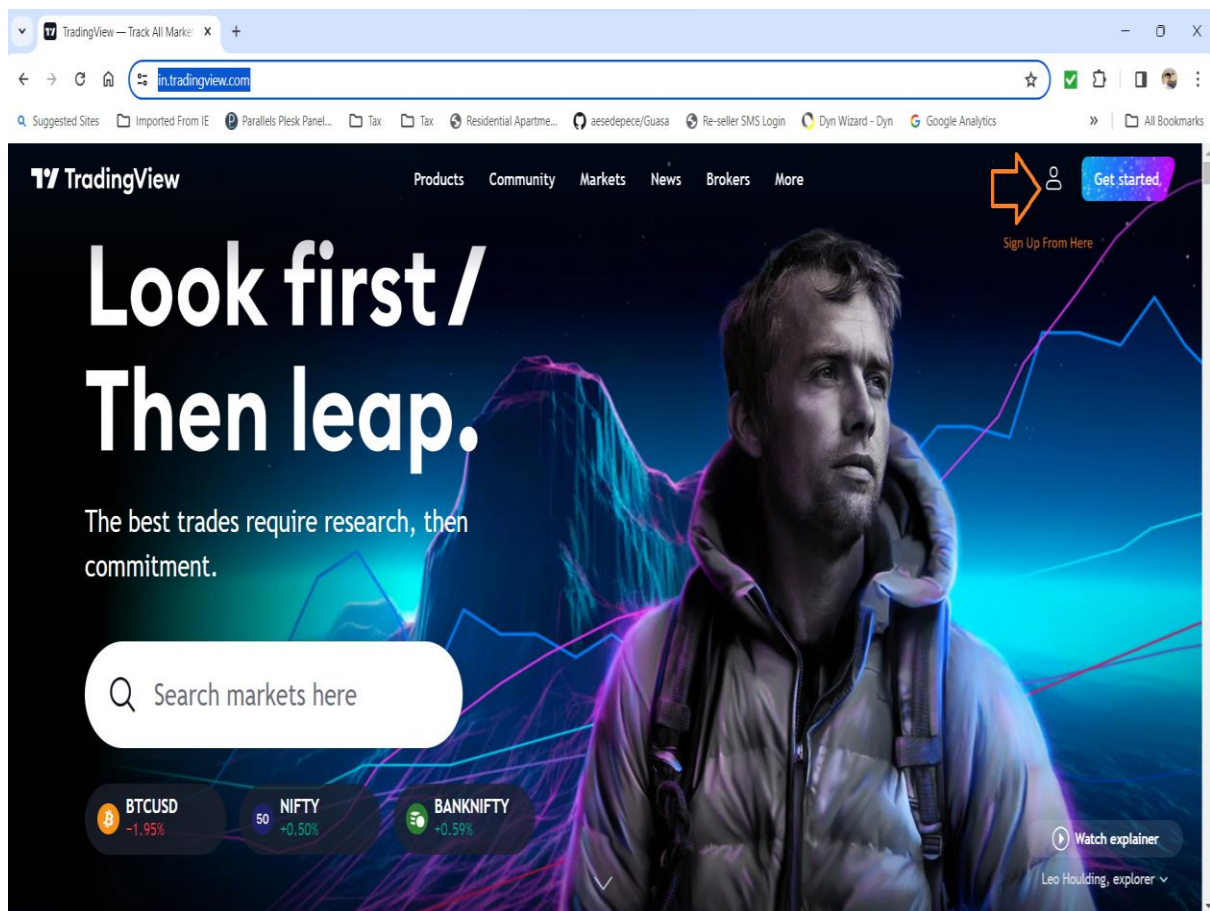
Time Frame :- HTF 1 Is 4,5,7,10 Minute & HTF 2 Is -3,4,5,8 Minute and Main Time Frame 1 Minute - 3 Minute

HTF 1 Should Be Greater than HTF 2

Trading Timing :- Suitable Trading Time Morning 9.15 Am To 11.30 AM Don't Worry Bot Generate Better Signals On Remaining Time Also But Keep In Mind This Signals Are More Fast Result

How To Install Indicator On Trading View Chart After Payment

Stage 1. Open Account With Trading View <https://in.tradingview.com> or Download App From Play Store



Go To Chart Click On Indicators

Go To Invite – only – scripts

Select Your Activated Indicators

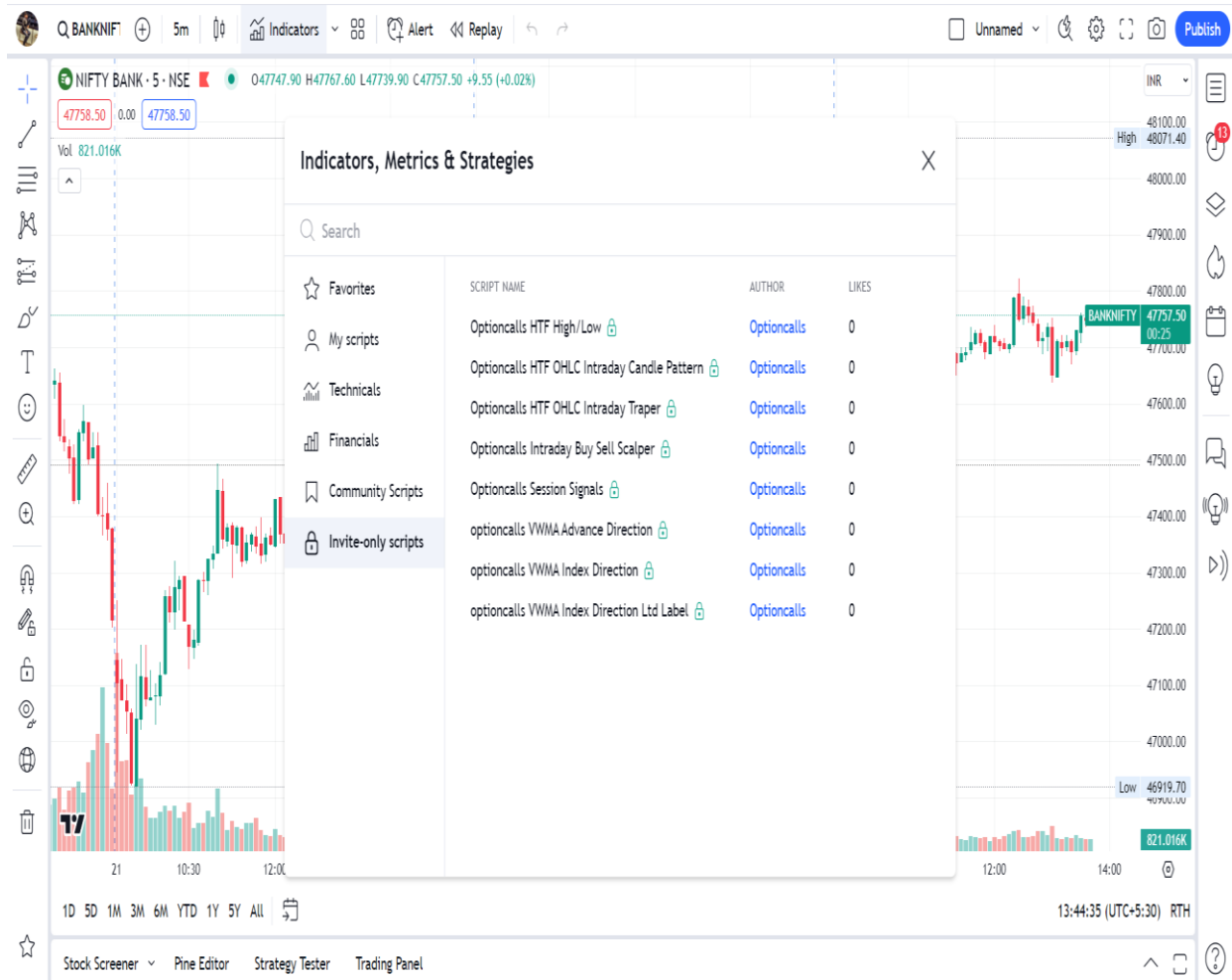
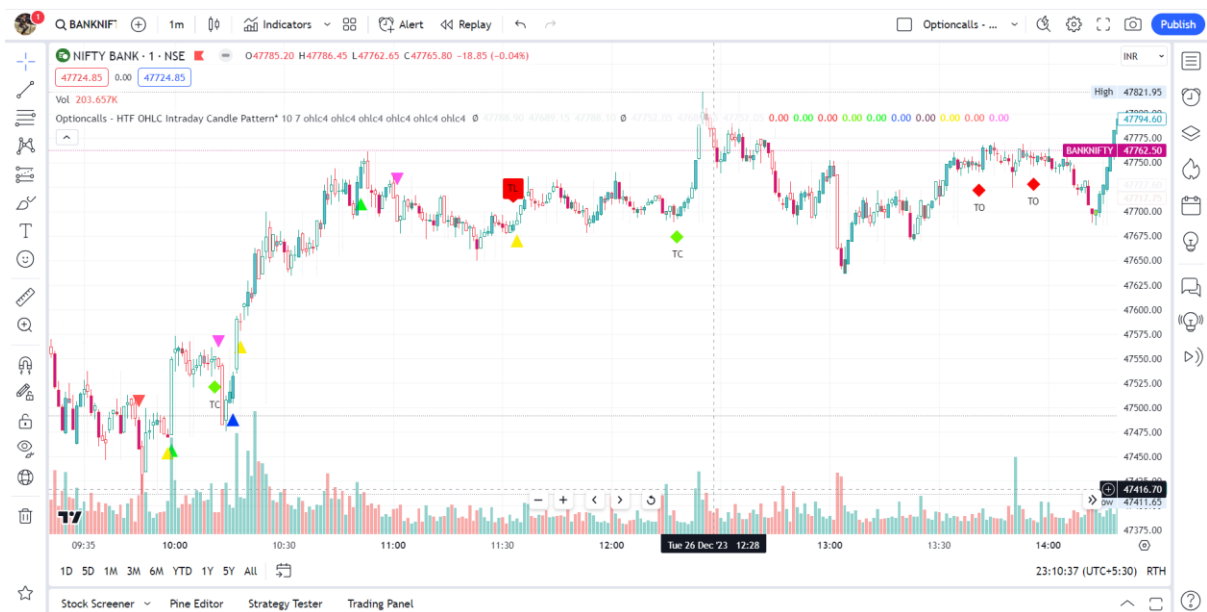
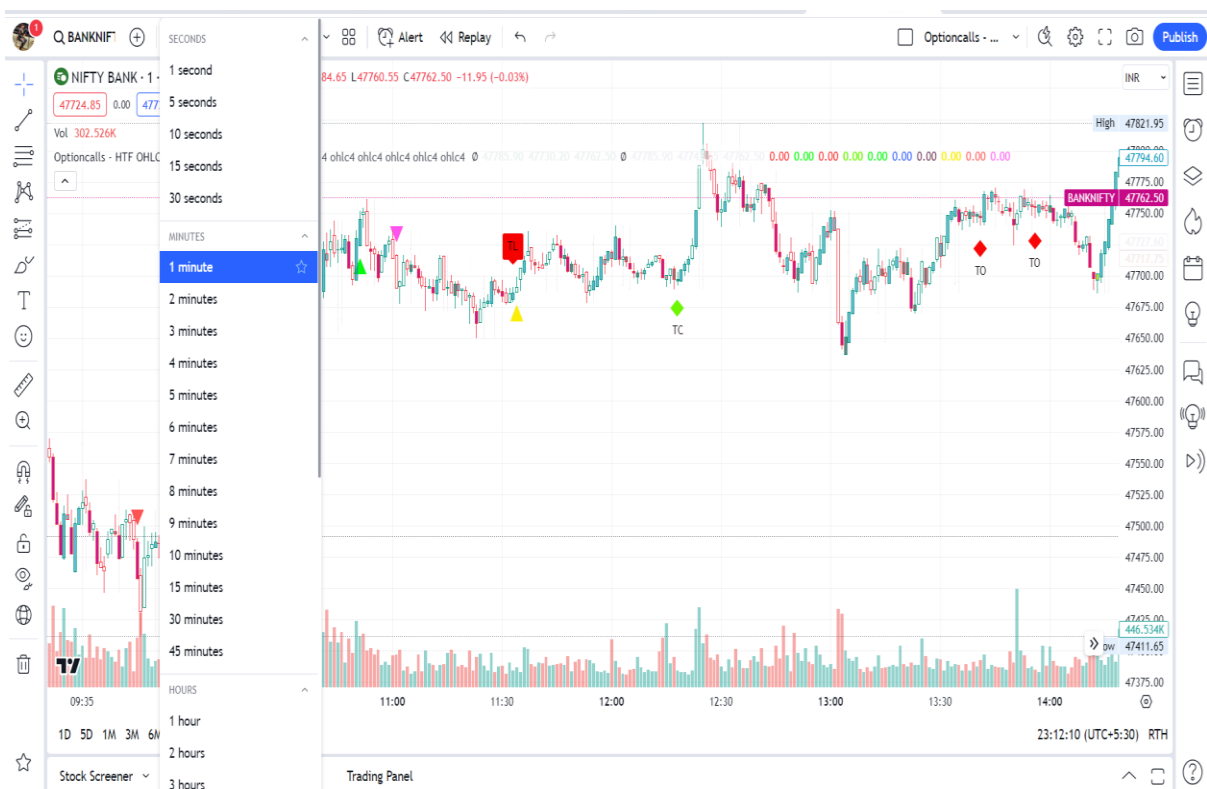


Chart :-



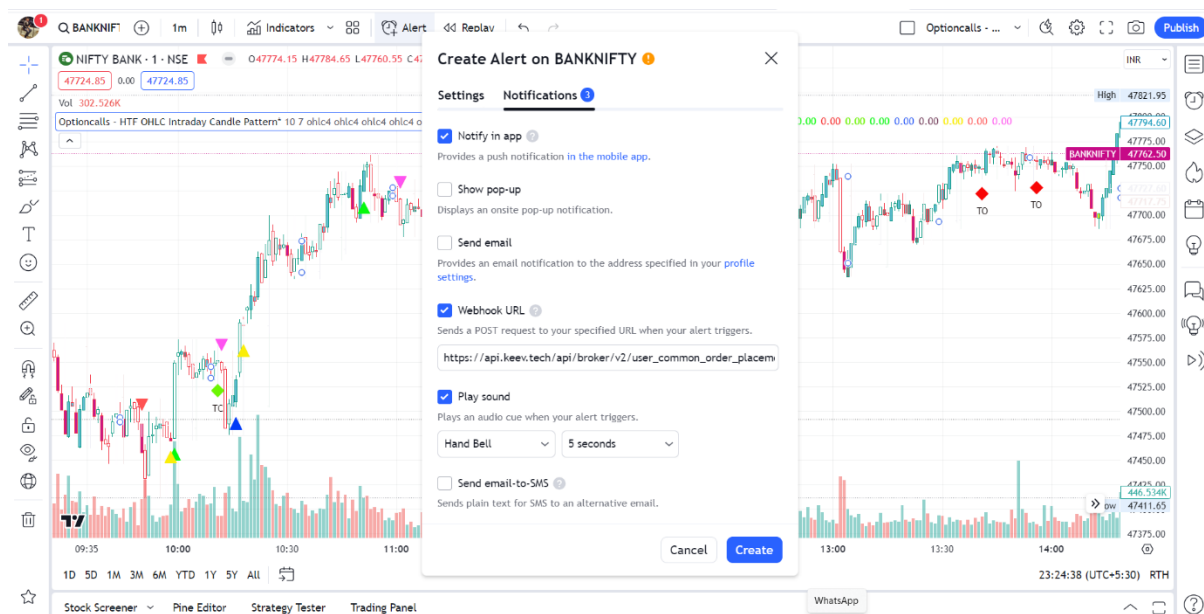
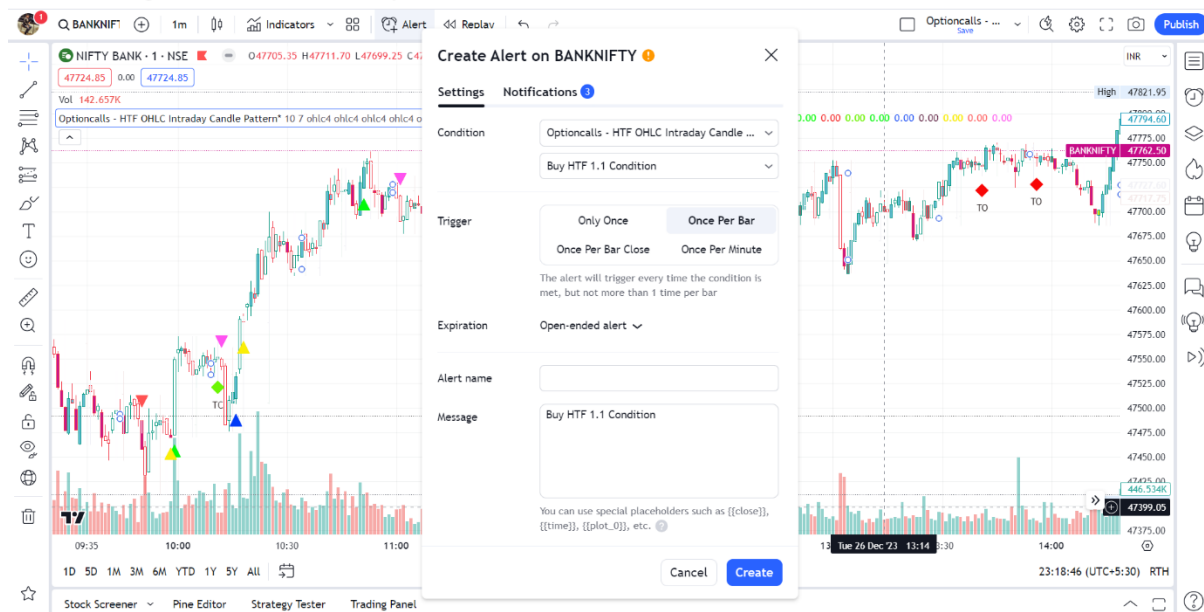
Select You Prefer Time Frame :-



Prefer Time Frame 1-3 Minute

Alerts & Webhooks For Auto Buy Or Sell Only

Alert Setting :- Once Per Bar Only



NB :- Alerts & Webhook Functions Will Be Accessible As Per Your Trading View Account Plan.

Alerts are used for manual trading as well as also trading with webhook

Other Signals :-

TL :- 90 % Chances Of Down

TH :- 90 % Chances Of Up

Other Signals :-

TL :- 90 % Chances Of Down

TH :- 90 % Chances Of Up

TC :- 50 % Chance To Up Or Down

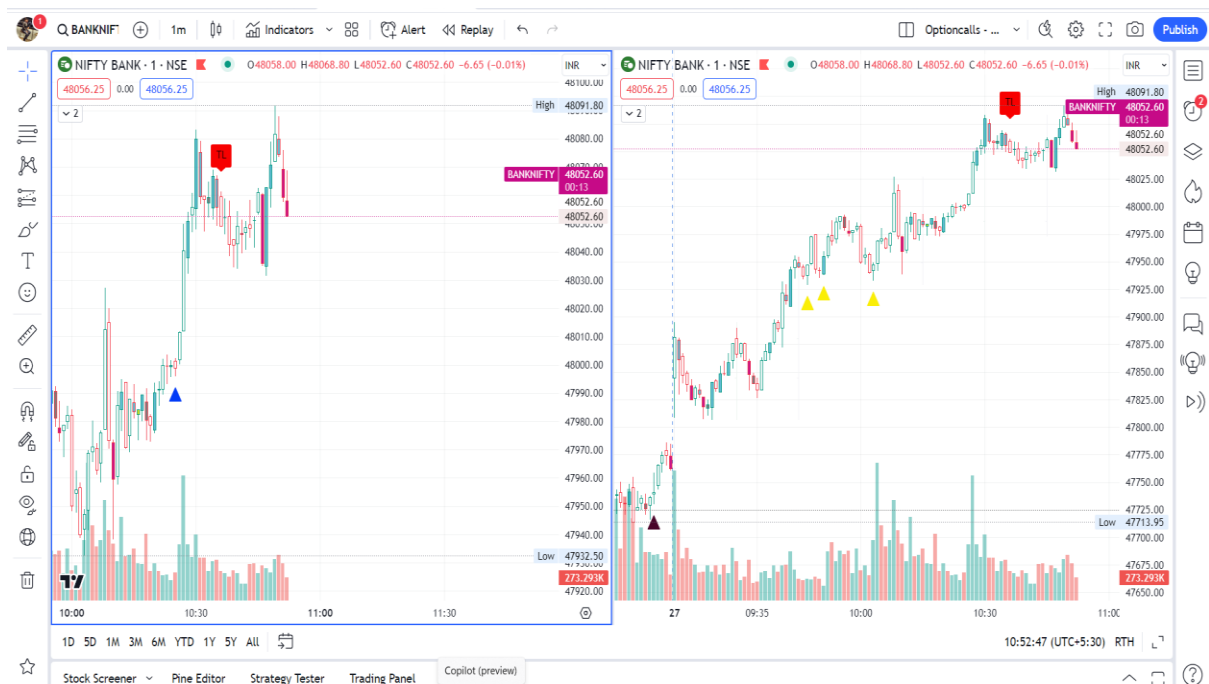
TO :- 50 % Chance To Up Or Down

These 4 Signals Prompt Before Trend Change Or Trap ,But The Main area Of Trades Starts Here Means After Generate Any Trap , Or Buy Sell Signal There will Be Create Trend Line Mark. Candle Colour Will Change When Trend Start Changes Like When Uptrend Will Start Candle Colour Will Display Hollow Green Colour & When Down Trend Will Start Then Candle Colour Will Display Hollow Red.

Another Sign Of Sudden Changes Is Black Candle Whether its Green Or Red Means If After Some Candle Down Sudden Black Red Candle Generate Means There is chances of Sudden Up Trend and vice versa for down Trend Also

You Have to monitor closely for the situation if want to take trade other than signal appear

For Better Result Indicator Used In Twin Window With Different Time Frame Like This :-



Disclaimer :-

No Any Indicator Or Bot is 100 % Correct Please Test Indicator Before You Take Trade , Indicator Test Done On Historical Calculation. This Indicator Doesn't Guarantee Profitable Trades ,Trading Is An Technique And Indicator Provide Visual Technical Analysis Help ,Profit & Loss Responsibilities 100 % Depends on Users